

# SUMMER IN CENTRAL PARK

HORACE SILVER 1972

Med Jazz Waltz

♩ = 134

**A**

Fmaj7

A7b9

D-9

G13



Db6

Gb6

G-9

A13b9



**B**

Dmaj9

D-9



Dmaj9

D-9



Dmaj9

D-9



Dmaj9

/F#

G-7

Gb7/C (C7b9#11)



**C**

Fmaj7

A7b9

D-9

G13



Db6

Gb6

A6

D6



Db6

G-7

Gb7/C (C7b9#11)



(last x : rit.)

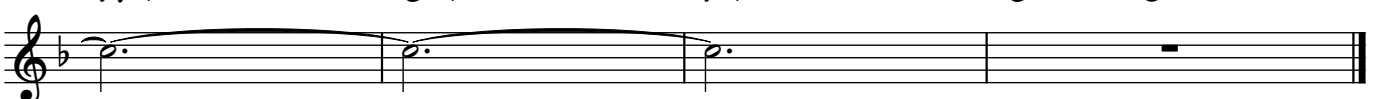
Ab6

Gb6

F6

G-7

C7



(fine)