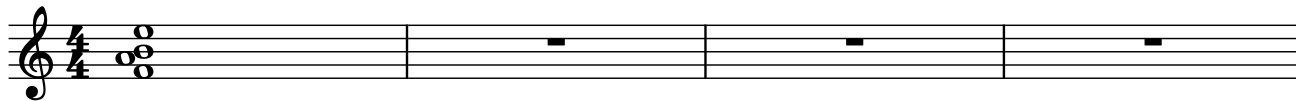


STRUCTURE LYOENNE #1

Utilisations possibles de la structure lydienne :



FM7^{#11} Lydien, ou Lydien augmenté **G13/9** Mixolydien ou Lydien dominante :
V7 majeurs non altérés, blues, accords substitués

Asus^{9#5} Aeolien, Mixolydien b6 **Bsus^{4b5}** m7b5, II-V mineurs... locrien, locrien bécarré 2

Cmaj^{6add4} peu usité **Dm^{6/9}** dorien, mineur mélodique, I mineur, ...

Esus^{4b9} phrygien, phrygien bécarré 6 **C#7^{#9b13}** V7 altérés...

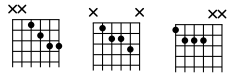
POSITION SERRÉE

Premier renversement : injouable sauf en utilisant des cordes à vide et/ou harmoniques

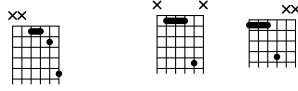
2ème renversement **3ème renversement : injouable sauf en utilisant des cordes à vide et/ou harmoniques**

PREMIÈRE INVERSION (DROP 2)

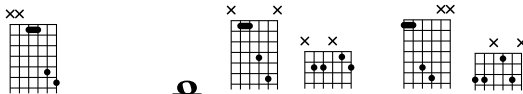
État fondamental



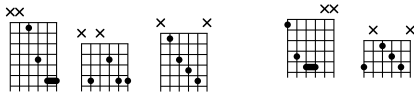
1er renversement



2e renversement

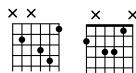


3e renversement

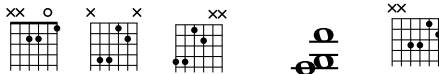


DEUXIÈME INVERSION (DROP 3)

État fondamental



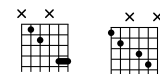
1e renversement



2e renversement



3e renversement



TROISIÈME INVERSION (DROP 2 & 4)

État fondamental

Diagram 1: x x

Diagram 2: x x

1er renversement

Diagram: x x

2e renversement

Diagram 1: xx

Diagram 2: x x

Diagram 3: xx

3e renversement

Diagram: xx

(la bonne blague)

QUATRIÈME INVERSION

État fondamental

Diagram 1: x x

Diagram 2: x x

Diagram 3: xx

1er renversement

Diagram 1: x x

Diagram 2: x x

Diagram 3: xx

2e renversement

Diagram 1: xx

Diagram 2: x x

Diagram 3: xx

3e renversement

Diagram 1: xx

Diagram 2: x x

Diagram 3: xx

CINQUIÈME INVERSION

État fondamental

The diagram shows a guitar chord for the fifth inversion of a major triad. The notes are G4 (1st fret, 2nd string), B4 (2nd fret, 4th string), and D5 (2nd fret, 5th string). The 3rd and 6th strings are muted, indicated by 'x' marks above the fretboard. The musical staff shows the notes G4, B4, and D5 on the treble clef, with rests on the 2nd, 3rd, and 4th strings.

1er renversement

Two guitar chord diagrams are shown for the first inversion of the fifth inversion. The first diagram has notes B4 (2nd fret, 4th string), D5 (2nd fret, 5th string), and G4 (1st fret, 2nd string), with the 3rd and 6th strings muted. The second diagram has notes D5 (2nd fret, 5th string), G4 (1st fret, 2nd string), and B4 (2nd fret, 4th string), with the 3rd and 6th strings muted. The musical staff shows the notes B4, D5, and G4 on the treble clef, with rests on the 2nd, 3rd, and 4th strings.

2e renversement

The diagram shows a guitar chord for the second inversion of the fifth inversion. The notes are D5 (2nd fret, 5th string), G4 (1st fret, 2nd string), and B4 (2nd fret, 4th string), with the 3rd and 6th strings muted. The musical staff shows the notes D5, G4, and B4 on the treble clef, with rests on the 2nd, 3rd, and 4th strings.

3e renversement

Two guitar chord diagrams are shown for the third inversion of the fifth inversion. The first diagram has notes G4 (1st fret, 2nd string), B4 (2nd fret, 4th string), and D5 (2nd fret, 5th string), with the 3rd and 6th strings muted. The second diagram has notes B4 (2nd fret, 4th string), D5 (2nd fret, 5th string), and G4 (1st fret, 2nd string), with the 3rd and 6th strings muted. The musical staff shows the notes G4, B4, and D5 on the treble clef, with rests on the 2nd, 3rd, and 4th strings.