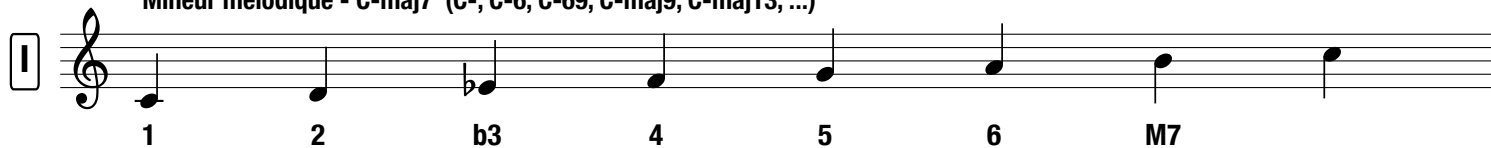
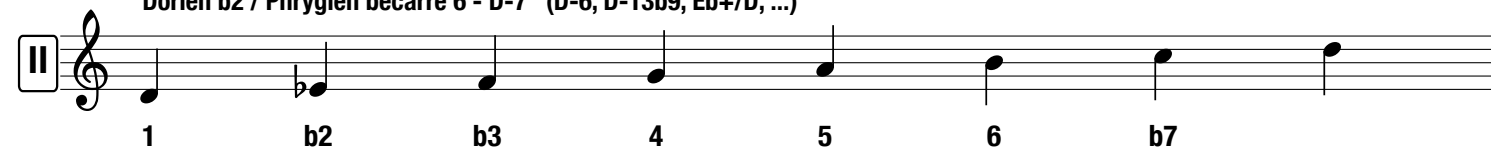


# Les modes de mineur mélodique

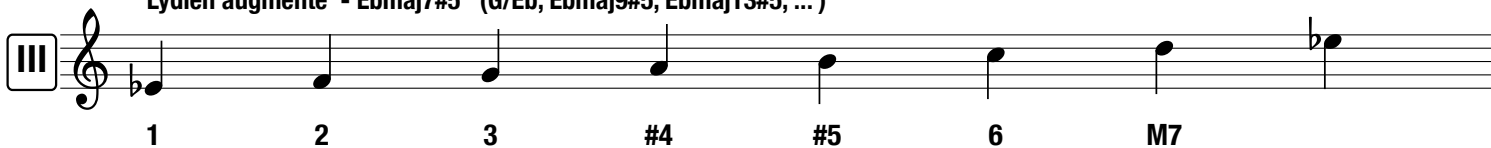
**I** Mineur mélodique - C-maj7 (C-, C-6, C-69, C-maj9, C-maj13, ...)



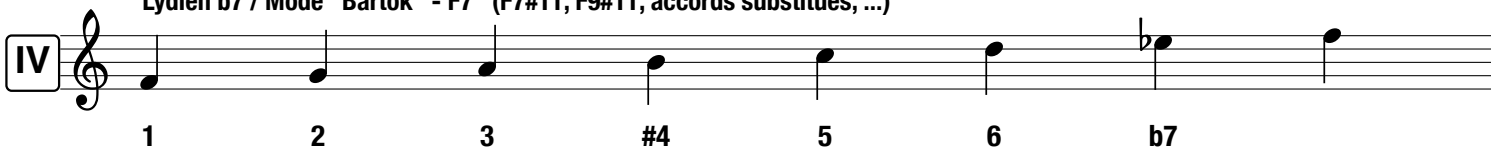
**II** Dorien b2 / Phrygien bécarré 6 - D-7 (D-6, D-13b9, Eb+/D, ...)



**III** Lydien augmenté - Ebmaj7#5 (G/Eb, Ebmaj9#5, Ebmaj13#5, ...)



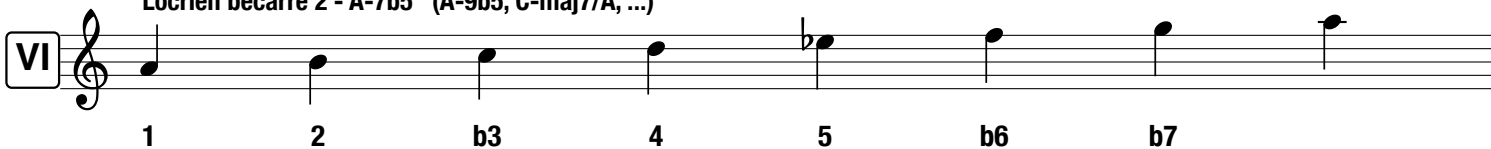
**IV** Lydien b7 / Mode "Bartok" - F7 (F7#11, F9#11, accords substitués, ...)



**V** Mixolydien b6 - G7 (G7b13, G9b13, [G7#5, G+], ...)



**VI** Locrien bécarré 2 - A-7b5 (A-9b5, C-maj7/A, ...)



**VII** Altéré / Superlocrien - Balt (B7 : b9, #9, #11, b13)

